

Telemetrix

Smiths Telemetrix range is designed for a modern sporting look with attractive brushed aluminium bezels, cirrus white dials and red pointers creating great clarity for the performance and race car driver.

The Telemetrix range was original equipment on the TVR range of sports cars in the UK.



AMMETER

TELEMETRIX

Part No. **TAM1-0052-06**

Type: Electrical
Range: 60-0-60 Amps
Scale: Arc
Fitting: Spade
Dia: 52mm
Bezel: Silver 1/2 Round

Fitting Instructions



AMMETER

TELEMETRIX

Part No. **TAM1-0052-03**

Type: Electric
Range: 30-0-30
Scale: Full
Dia: 52mm
Bezel: Silver 1/2 Round

Fitting Instructions



Representative Image

CLOCK

TELEMETRIX

Part No. **TAC1-1052-00**

Type: Electrical
Range: 12hour
Scale: Full
Fitting: Spade
Dia: 52mm
Bezel: Silver 1/2 Round

Fitting Instructions



CLOCK

TELEMETRIX

Part No. **TAC1-1052-01**

Type: Electric
Range: 12hours
Scale: Full
Dia: 52mm
Bezel: Silver 1/2 Round

Fitting Instructions



FUEL TANK LEVEL

TELEMETRIX

Part No. **TFC1-1552-00**

Type: Electric
Range: 0 - 1/2 - 1
Scale: Full
Fitting: Spade
Dia: 52mm
Bezel: Silver
Use sender Part No. TB9006Kit or TB9013Kit

Fitting Instructions



OIL PRESSURE

TELEMETRIX

Part No. **TOP1-3832-10**

Type: Mechanical
Range: 0 - 10 Bar
Scale: Full
Fitting: 1/8in NPT
Dia: 52mm
Bezel: Silver 1/2 Round Use Fitting Kit Part No. LK-2

Fitting Instructions



OIL PRESS./WATER TEMPERATURE

TELEMETRIX

Part No. **TGD1301-64078**

Type: Mechanical
Range: 0 - 100 PSI / 90 - 230° F
Scale: Full Dia: 52mm
Fitting: 1/8in NPT / 3/8BSP
Bezel: Silver 1/2 Round
Capillary length 78in.
Comes with 3/8BSP to 5/8UNF adaptor. Use LK-1 on Pressure

Fitting Instructions



OIL PRESSURE

TELEMETRIX

Part No. **TOP1-1552-10**

Type: Electric
Range: 0 - 10 Bar
Scale: Arc
Fitting: Spade
Dia: 52mm
Bezel: Silver 1/2 Round
Use Sender Part No. PTR3000-8N-

Fitting Instructions



OIL PRESSURE**TELEMETRIX****Part No. TOP1-1552-07**

Type: Electric
 Range: 0 - 7 Bar Scale: Arc
 Fitting: Spade
 Dia: 52mm
 Bezel: Silver 1/2 Round Use
 Sender Part No.
 PTR3000-8N-10

**Fitting Instructions****OIL PRESSURE****TELEMETRIX****Part No. TOP1-3832-07**

Type: Mechanical
 Range: 0 - 7 Bar
 Scale: Full
 Fitting: 1/8in NPT
 Dia: 52mm
 Bezel: Silver 1/2 Round
 Use Fitting Kit Part No. LK-2

**Fitting Instructions:****FUEL PRESSURE****TELEMETRIX****Part No. TFP1-3832-07**

Type: Mechanical
 Range: 0 - 7 Bar
 Scale: Full
 Fitting: 1/8in NPT
 Dia: 52mm
 Bezel: Silver 1/2 Round
 Use Fitting Kit Part No. LK-2

**Fitting Instructions:****FUEL PRESSURE****TELEMETRIX****Part No. TFP1-3832-02**

Type: Mechanical
 Range: 0 - 2 Bar
 Scale: Full
 Fitting: 1/8in NPT
 Dia: 52mm
 Bezel: Silver 1/2 Round
 Use Fitting Kit Part No. LK-2

**Fitting Instructions:****WATER TEMP****TELEMETRIX****Part No. TCT1-1452-12**

Type: Electrical
 Range: 40 - 120°C
 Scale: Arc
 Fitting: Spade
 Dia: 52mm
 Bezel: Silver 1/2 Round
 Use Sender Part No. TT3001-8N

**Fitting Instructions****WATER TEMP****TELEMETRIX****Part No. TCT1-3832-002**

Type: Mechanical
 Range: 40 - 150°C Scale: Full
 Fitting: 3/8BSP Dia: 52mm
 Bezel: Silver 1/2 Round
 Capillary length 78in.
 Comes with 3/8BSP to 5/8UNF adaptor.

**Fitting Instructions:****TRANSMISSION OIL TEMPERATURE****TELEMETRIX****Part No. TTT1-1452-15**

Type: Electric
 Range: 50 - 150°C
 Scale: Arc
 Fitting: Spade
 Dia: 52mm
 Bezel: Silver 1/2 Round
 Use Sender Part No. TT3005-8N

**Fitting Instructions****OIL TEMPERATURE****TELEMETRIX****Part No. TOT1-1452-15**

Type: Electric
 Range: 50 - 150°C
 Scale: Arc
 Fitting: Spade
 Dia: 52mm
 Bezel: Silver 1/2 Round
 Use Sender Part No. TT3005-8N

**Fitting Instructions****OIL TEMPERATURE****TELEMETRIX****Part No. TOT1-3832-002**

Type: Mechanical
 Range: 40 - 150°C Scale: Full
 Fitting: 3/8BSP Dia: 52mm
 Bezel: Silver 1/2 Round
 Capillary length 78inches.
 Comes with 3/8BSP to 5/8UNF adaptor.

**Fitting Instructions:****TURBO BOOST****TELEMETRIX****Part No. TMP1-3832-21**

Type: Mechanical
 Range: -1 to +1.5 Bar
 Scale: Full
 Fitting: 1/8in NPT
 Dia: 52mm
 Bezel: Silver 1/2 Round

**Fitting Instructions:**

VOLTMETER**TELEMETRIX****Part No. TV01-1052-03**

Type: Electric
 Range: 9-17 Volts
 Scale: Arc
 Dia: 52mm
 Bezel: Silver 1/2 Round

Fitting Instructions**VOLTMETER****TELEMETRIX****Part No. TV01-1052-02**

Type: Electric
 Range: 9 - 17 Volts
 Scale: Arc
 Fitting: Spade
 Dia: 52mm
 Bezel: Silver 1/2 Round

Fitting Instructions**SPEEDOMETER****TELEMETRIX****Part No. TES5-1B32-02**

Type: Electrical
 Range: 0 - 240 kph
 Scale: Full
 Fitting: Harness
 Dia: 100mm
 Bezel: Silver 1/2 Round

Fitting Instructions**SPEEDOMETER****TELEMETRIX****Part No. TES3-1B32-00**

Type: Electrical
 Range: 0 - 140mph
 Scale: Full
 Dia: 80mm
 Bezel: Silver 1/2 Round

Fitting Instructions

Representative Image

SPEEDOMETER**TELEMETRIX****Part No. TES5-1B32-03**

Type: Electrical
 Range: 0 - 280 kph
 Scale: Full
 Fitting: Harness
 Dia: 100mm
 Bezel: Silver 1/2 Round

Fitting Instructions**SPEEDOMETER****TELEMETRIX****Part No. TES3-1B32-02**

Type: Electrical
 Range: 0 - 240 kph
 Scale: Full
 Fitting: Harness
 Dia: 80mm
 Bezel: Silver 1/2 Round

Fitting Instructions**SPEEDOMETER****TELEMETRIX****Part No. TES3-1B32-01**

Type: Electric
 Range: 0 - 180 mph
 Scale: Full
 Dia: 80mm
 Bezel: Silver 1/2
 Round

Fitting Instructions**SPEEDOMETER****TELEMETRIX****Part No. TES3-1B32-03**

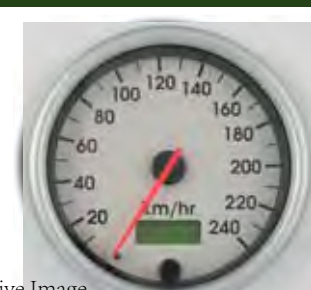
Type: Electrical
 Range: 0 - 280 kph
 Scale: Full
 Fitting: Harness
 Dia: 80mm
 Bezel: Silver 1/2 Round

Fitting Instructions**SPEEDOMETER****TELEMETRIX****Part No. TES5-1B32-01**

Type: Electrical
 Range: 0 - 180 mph
 Scale: Full
 Dia: 100mm
 Bezel: Silver 1/2 Round

Fitting Instructions**SPEEDOMETER****TELEMETRIX****Part No. TES5-1B32-00**


Type: Electric
 Range: 0 - 140mph
 Scale: Full
 Dia: 100mm
 Bezel: Silver 1/2 Round

Fitting Instructions

Representative Image


TACHOMETER **TELEMETRIX**

Part No. **TET3-5B32-00**
 Type: Electrical
 Range: 0 - 8000 RPM
 Scale: Full
 Fitting: Harness
 Dia: 80mm
 Bezel: Silver 1/2 Round
 2, 3 or 4 pulses / rev
[Fitting Instructions](#)



TACHOMETER **TELEMETRIX**

Part No. **TET3-5B32-03**
 Type: Electrical
 Range: 0 - 14000 RPM
 Scale: Full
 Dia: 80mm
 Bezel: Silver HalfRound
[Fitting Instructions](#)



Representative Image

TACHOMETER **TELEMETRIX**

Part No. **TET5-5B32-00**
 Type: Electric
 Range: 0 - 8000 RPM
 Scale: Full
 Fitting: Harness
 Dia: 100mm
 Bezel: Silver 1/2
 Round 2, 3 or 4 Pulse / rev
[Fitting Instructions](#)

